

Our Balustrade Range



Systems

- Professional Balustrade
- Elegance Balustrade
- Wire Rope Balustrade
- Mirador Balustrade
- Glass Shelves
- Glass Divider Protective Screens
- On-Level Balustrade
- Juliet Balconies
- Skyforce Balconies
- Button Systems
- Canopies

Professional

Glass Balustrade System



Info/ Components



Intermediate/Mid Post



End Post



Corner Post



Stainless Steel Tube (Top Rail)



90-Degree Corner Elbow



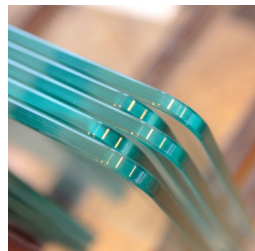
Adjustable Corner Saddle



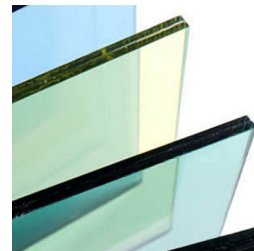
Upright Clamp/ Wall Flange



Tube Connector



Toughened Glass Panel



Toughened Laminated
Glass Panel



Flat back Glass Clamp



Face-Fix Clamp For side fix

Maximum Centres
1200mm

Material Grades
Grade 316 (external)

Glass Thickness
10mm toughened, 12mm
toughened, 10.76mm laminated

Standard Height (To top of rail)
1121mm, bespoke sizes available

Tube Diameters
42.4mm, 48.3mm

Stainless Steel Post Finishes
Mirror polished, Brushed satin

Available in any RAL colour
Please ask for details

Glass Options
Coloured (10mm), clear or frosted

Base Plates Available
100mm diameter/105mm base
cover, 120mm diameter/125mm
base cover

Compatible Fixings
Wood, steel, brick or concrete

Post Construction
Welded base plate, glass clamps
and tube support to top

Can be used on stairs

*Side or top fixing available

Elegance

Glass Balustrade System



Info/ Components



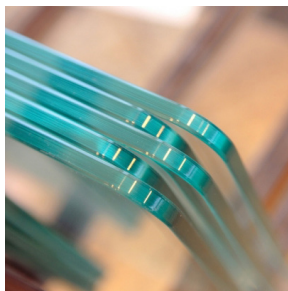
Mid Post



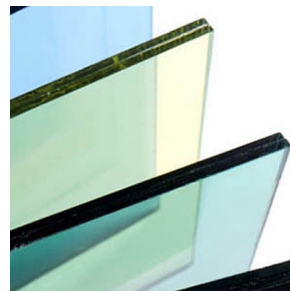
End Post



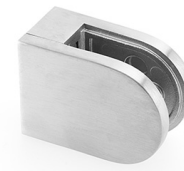
Corner Post



Toughened
Glass Panel



Toughened Laminated
Glass Panel



Flat back
Glass Clamp



Face-Fix Clamp
For side fix

Maximum Centres
1200mm

Post Finishes
Mirror polished, Brushed satin

Available in any RAL colour
Please ask for details

Material Grades
Grade 316 (external)

Glass Options
Coloured (10mm and 12mm), clear or frosted

Tube Diameters
42.4mm, 48.3mm

Base Plates Available
100mm diameter/105mm base cover, 120mm diameter/125mm base cover

Standard Height (To top of post)
1100mm, bespoke sizes available

Compatible Fixings
Wood, metal, brick or concrete

Post Construction
Welded base plate, glass clamps and end cap to top, base plate cover

Glass Thickness
10mm toughened, 12mm toughened, 10.76mm laminated

Can be used on stairs

Wire Rope

Balustrade System



Info/ Components



Mid Post



End Post



Corner Post



Wire Rope



Swage Fork Terminal



90-Degree
Corner Elbow



Adjustable
Corner Saddle



Eyelet - Metal



Eyelet - Wood



Swage Rigging Screw



Cable Holder



Stainless Steel
Tube



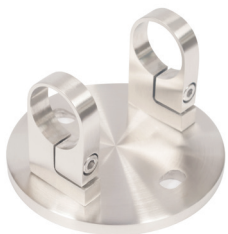
Wall Flange



Tube Connector



End Cap



Face-Fix Clamp



Glue 50ml



Activator



Scotch-Brite Cloth



Hydraulic
Crimping Tool

Maximum Centres
1200mm - 1500mm

Material Grades
Grade 316 (external)

Standard Row Volume
5. More or less rows available,
prices will vary

Standard Height (To top of rail)
1100mm

Tube Diameters
42.4mm, 48.3mm

Stainless Steel Post Finishes
Mirror polished, Brushed satin

Available in any RAL colour
Please ask for details

Base Plates Available
100mm diameter/105mm
basecover, 120mm
diameter/125mm base cover

Compatible Fixings
Wood, steel, brick or concrete

Post Construction
Welded base plate, glass clamps
and tube support to top

Wire Thickness
4mm

This system does not comply to
building regulations. Please consult
your building inspector.

*Side or top fixing available

Mirador

Glass Balustrade System



Info/ Components



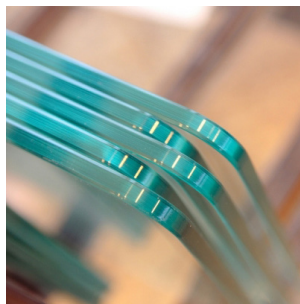
Corner Post



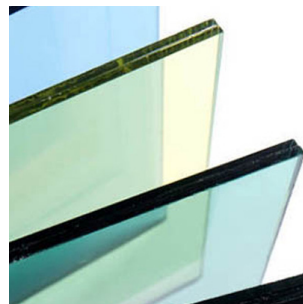
Mid Post



End Post



Toughened Glass Panel



Toughened Laminated
Glass Panel

Also
Available

Matching Handrail

Maximum Centres
1500mm

Post Colours
Stock items: black, silver matt,
anthracite grey

Available in any RAL colour
Please ask for details

Material
Aluminium powder coating

Glass Options
Clear or frosted

Post Height
1088mm

Post Width (End/mid post)
61mm

Glass Thickness
12mm toughened, 11.5mm
laminated Standard Height
1100mm

Compatible Fixings
Wood, steel, brick or concrete. Wall
track available

Post Construction
Aluminium upright, base plate and
sleeve for glass

Base Plates Available
100 x 120mm

**Post Width (Outside corner post/
inside corner post)**
80mm

On-Level

Glass Balustrade System



Info/ Components



Glass Profile



Inside/Outside Corner 90°



End Cap left / right



Spacer



U-Profile Handrail



Round Handrail



Flex-Fit Tool



Combi Tool



FLEXIFIT 1.0Kn

Base Channel Material
Aluminium

Base Channel Finish
Raw, anodised, stainless style, coloured

Available in any RAL colour
Please ask for details

Standard Balustrade Height
1100mm

Glass Thickness
12 - 21.5mm

Glass Options
Clear, frosted or a choice of colours

Base Channel Type
12 - 21.5mm

Capping Finish
Raw, anodised, stainless style, coloured

Compatible Fixings
Steel or concrete

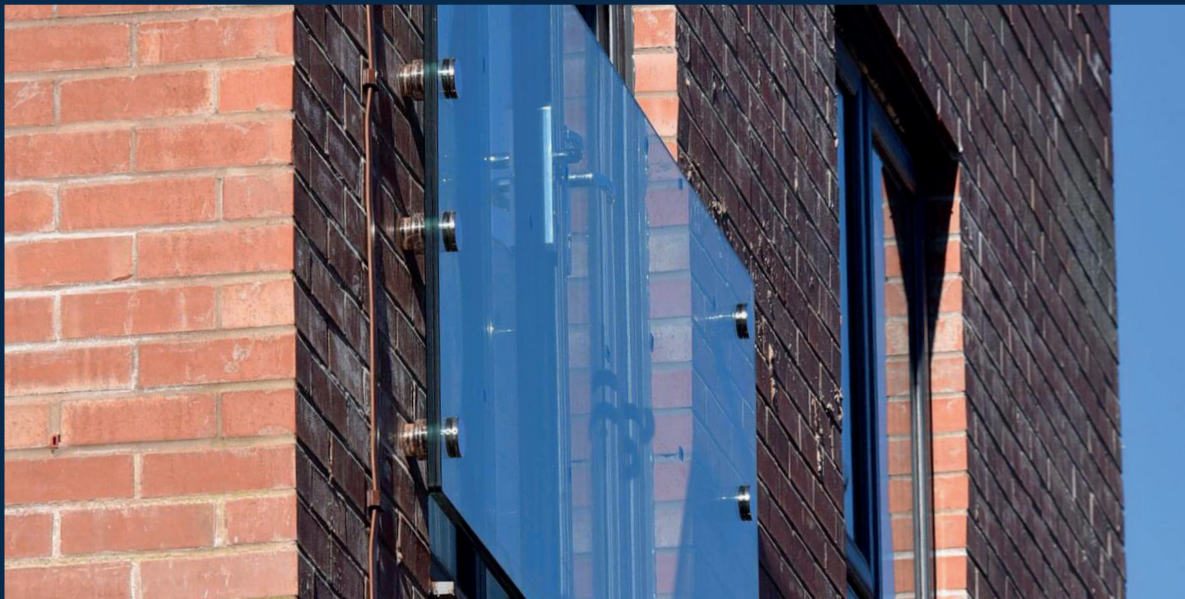
Maximum Glass Width
1500mm

Available in Side Fix
Please ask us about options

Systems available tested up to 3KN Please specify your KN and glass thickness requirements when placing your order

Juliet

Balconies



Juliet Professional

Maximum Length

Bespoke sizes available up to 2800mm

Material Grades

Grade 316 (external)

Glass Thickness

10mm toughened

Standard Height (To top of rail)

1100mm, bespoke sizes available

Tube Diameters

42.4mm, 48.3mm

Stainless Steel Post Finishes

Satin or mirror

Available in any RAL colour

Please ask for details

Glass Options

Coloured, clear or frosted

Base Plates Available

4x 150mm side fix brackets

Compatible Fixings

Metal, brick or concrete

Juliet Button

Maximum Length

Bespoke sizes available up to 3000mm

Material Grades

Grade 316 (external)

Glass Thickness

1.5mm laminated

Standard Height

1100mm, bespoke sizes available

No. of Clamps per Glass Panel

6 minimum

Stainless Steel Finishes

Mirror

Available in any RAL colour

Please ask for details

Glass Options

Frosted or clear

Button Clamp Sizes

58mm diameter

Compatible Fixings

Metal, brick or concrete



Skyforce Juliet

Balcony

Info/ Components

Maximum Length
1200 - 3000mm

Material Grade
Aluminium

Glass Thickness
10.76 - 21.52mm. Dependent on
required length

Standard Height
300 - 1200mm. Dependent on
required length

Finishes
Aluminium raw, aluminium
anodised, RAL glossy, RAL matt,
RAL stealth black

Glass Options
Coloured, clear or frosted

Capping Finish
Raw, anodised, stainless style,
coloured

Compatible Fixings
Metal, brick or concrete, plastic,
aluminium, wood.

Available in SkyForce Top &
SkyForce Side. Please specify your
required system and glass thickness
when placing your order.

Glass Button Systems



Info/ Components

Maximum Centres
1500mm

Maximum Height
1100mm

No. of Clamps per Glass Panel
6 minimum

Compatible Fixings
Steel or concrete

Button Clamp Sizes
30mm diameter, 50mm diameter

Stainless Steel Finish
Mirror polished or brushed satin.
Choice of RAL paint finish, prices
will vary

Glass Options
Frosted (17.5mm and 21.5mm only)
or clear

Glass Thickness
15mm toughened, 17.5mm
laminated, 21.5mm laminated



Glass Canopies

Linea

Glass Thickness
17.5mm

Glass Sizes Available
1140 x 800mm, 1440 x 800mm,
1800 x 800mm, 2000 x 800mm,
2200 x 800mm

Wall Track Material
Aluminium Glass Type Toughened
laminated Compatible Fixings
Resin and thread

Wall Track Finish
Satin

Linea Plus

Glass Thickness
21.5mm

Glass Sizes Available
1140 x 1200mm, 1440 x
1200mm, 1800 x 1200mm,
2000 x 1200mm, 2200 x
1200mm

Wall Track Material
Aluminium

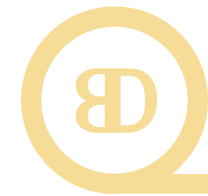
Glass Type
Toughened laminated
Compatible Fixings Resin and
thread

Wall Track Finish
Satin

Needs fixing to steel or concrete
plinth - not suitable for wood
or brick.

Our Balustrade Range

Your Local Stockist



QUALITY BY DESIGN

enquiries@qbdltd.co.uk

01242 530300

Unit 5 Church Farm, Church Road, Leckhampton, Cheltenham, GL53 0QJ

We offer a bespoke range which can be quoted on an individual basis.
Please contact us for more details.